



110 YEARS OF IMPACT

YMCA OF GREENWICH ▶ 2025 ANNUAL REPORT



GREENWICHYMCA.ORG

OUR MISSION

The YMCA of Greenwich's mission is to bring together and strengthen the community through programs and services that build a healthy spirit, mind, and body for all men, women, and children.

STRENGTHENING THE COMMUNITY IS OUR CAUSE.

Every day, we work side-by-side with our neighbors to make sure that everyone, regardless of age, income, or background, has the opportunity to learn, grow and thrive.

OUR PILLARS:

YOUTH DEVELOPMENT

Nurturing the potential of every child and teen.

HEALTHY LIVING

Improving our community's health and wellbeing.

SOCIAL RESPONSIBILITY

Giving back and providing support to our neighbors.

COMMUNITY PARTNERS



A LETTER FROM OUR CEO & BOARD CHAIR

This year marks an extraordinary milestone for the YMCA of Greenwich as we celebrate 110 years of strengthening our community. For more than a century, the Y has continued to grow and evolve alongside the needs of the people we serve. In 2025, that commitment was reflected in meaningful new programs, expanded opportunities, and a continued focus on creating impact for all.

Throughout the year, we expanded programs that support individuals and families at every stage of life. In September, we proudly launched our Early Learning Center, creating a nurturing environment where young children can learn, explore, and build a strong foundation for the future. This addition also provides working families with access to high-quality, reliable care and strengthens a full continuum of youth development at the Y.

We also introduced new, evidence-based health initiatives to better support our community's well-being. One example is Walk With Ease, a free program designed to help individuals manage arthritis through guided movement and physical activity. Programs like this ensure that people of all ages and abilities have access to resources that improve both health and quality of life.

Our Pathway to Employment program, in partnership with Abilis, continued to grow in 2025 with multiple cohorts and interns working across several departments. This hands-on program provides individuals with disabilities the opportunity to build skills, gain meaningful work experience, and grow in confidence within a supportive environment. These experiences are a powerful reminder of what can be achieved when opportunity is made accessible.

At the YMCA of Greenwich, we are committed to serving people of all backgrounds and abilities. We strive to ensure that everyone who walks through our doors feels welcomed, supported, and empowered to reach their full potential.

Because of the generosity of our donors, these programs and the opportunities they create reach more individuals and families across Greenwich. Looking ahead, we are excited to continue building on this momentum. In 2026, we will launch a new partnership with Scouting America at Camp Seton, expanding our camp offerings and creating more opportunities for children to connect with nature, build confidence, and form lasting friendships. This partnership will also allow us to increase access to financial assistance so more families can participate.

As we reflect on 110 years of impact, we are grateful for the members, donors, staff, volunteers, and community partners who make this work possible. Your support strengthens our mission and allows us to continue serving the Greenwich community in meaningful ways. We are proud of what we have accomplished together and look forward to what lies ahead.

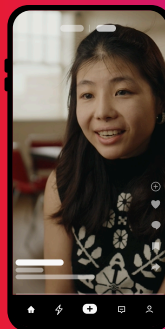
With appreciation,



Matthew Skaarup
Chief Executive Officer



Robert Burton
Chairman of the Board



WATCH OUR IMPACT VIDEO

Learn more about our 110 years of impact, the difference we're making in the Greenwich community, and where we want to go next.

OUR IMPACT

Because of the support of our members, donors, and community partners, the YMCA of Greenwich continues to expand access and create meaningful impact across our community.



PROVIDING ACCESS TO ALL

\$600,000+ awarded in financial assistance, provided to help ensure access across our community, supporting individuals and families in membership, childcare, swim lessons, youth programs, and more.

500+ children, adults, and families received scholarships, removing financial barriers and opening doors to opportunity



STRENGTHENING OUR COMMUNITY

12,000+ community members served, reflecting the Y's role as a welcoming hub for connection, growth, and belonging

3,495 membership units (families and households) actively engaged at the Y, building healthier lives and stronger relationships together



EMPOWERING YOUTH & FAMILIES

2,000+ youth served through programs that support academic enrichment, physical activity, and personal growth

200+ children enrolled in childcare programs, providing safe, supportive care during and beyond school hours.

50% of participants in our childcare programs receive financial assistance, helping make quality care accessible to more families



TEACHING WATER SAFETY

15 children received free or subsidized swim lessons through our Safety Around Water program, gaining life-saving water safety skills

600+ 4th graders from Greenwich Public Schools evaluated for swim safety, helping identify and close gaps in ability

308 participants in our competitive aquatic programs, building confidence, discipline, and teamwork through swim, dive, and water polo



IMPROVING HEALTH OUTCOMES

100+ participants in chronic disease prevention programs, improving health outcomes and quality of life

1,985 seniors in Greenwich stay active and connected through our programs and facilities.



CREATING GROWTH OPPORTUNITIES

8 participants in our Pathway to Employment internship program during its first year, gaining skills, confidence, and real-world experience

125+ children served through Running Start, building strong foundations for future academic and personal success



EARLY LEARNING. LIFELONG IMPACT.

In 2025, the YMCA of Greenwich took an important step forward in supporting families with the launch of our Early Learning Center. Designed for children in their earliest and most formative years, the program provides a safe, engaging environment where children can learn, explore, and grow, supported by partnerships with United Way and the Office of Early Childhood’s Early Childhood Consultant Partnership.

Through play-based learning, social development, and structured activities, children build confidence, independence, and a strong foundation for future success. Enrichment opportunities such as Little Olympians, Music Together, and swimming further support their development, while families gain peace of mind knowing their children are in a caring and supportive environment.

Access remains at the heart of this work. Through financial assistance, we are ensuring that more families in our community can benefit from high-quality early childhood education, regardless of their financial circumstances.

“I truly feel like this school was hand-picked for my son, heaven-sent. Now that he’s in school, I notice like he’s more polite. He knows that he has to play with others and share. He’s just developing very well and I’m just noticing a lot of growth in him. Through the YMCA, I can say that my son is growing in school, and we’re grateful that as a family we can grow together as well.”

Shakira Annosier, Parent of a child in our Early Learning Center Toddler Program

EXPANDING ACCESS TO EARLY LEARNING

THE NEED:

20% of Greenwich Public School students qualify for free or reduced-price meals, underscoring the financial challenges many local families face, and the need for affordable childcare.

Source: Connecticut State Department of Education District Profile and Performance Report (School Year 2023-24)

HOW THE Y ANSWERS:

50% of Early Learning Center families receive financial assistance, helping make high-quality childcare accessible to all Greenwich residents.

\$128K+

provided in financial aid in our first school year, ensuring children can learn and grow in a supportive environment regardless of financial barriers.

5 classrooms, reflecting the program’s growth to meet demand and support more young learners.



ADAPTIVE PROGRAMMING:

OPPORTUNITIES FOR EVERY ABILITY.

ADAPTIVE SWIM LESSONS

Our adaptive swim lessons provide individualized instruction for swimmers of all abilities, helping participants build confidence, develop essential water safety skills, and feel comfortable in the pool.

Led by instructors certified through Swim Angelfish, these lessons are tailored to meet each swimmer's unique needs, ensuring a supportive and empowering experience for every participant.

PATHWAY TO EMPLOYMENT

In 2025, we launched our first cohort of the Pathway to Employment program, a partnership with Abilis that provides individuals with disabilities meaningful, hands-on work experience.

Participants serve as interns across departments including membership, facilities, wellness, and childcare, building job readiness skills, confidence, and independence in a supportive environment.

FITNESS MADE FUN DANCE PARTIES

Our monthly Fitness Made Fun dance parties bring together individuals with special needs from across the community for an hour of movement, music, and joy.

Free and open to all, this program regularly welcomes 50+ participants each month, including individuals from local organizations like Abilis. It's more than just fitness—it's a space to connect, have fun, and feel a sense of belonging.

CREATING INCLUSIVE OPPORTUNITIES

THE NEED:

16% of students in Greenwich Public Schools have a disability, highlighting the importance of inclusive programs and support for youth in our community.

Source: Connecticut State Department of Education District Profile and Performance Report (School Year 2023-24)

HOW THE Y ANSWERS:

50+ participants monthly in our Fitness Made Fun dance parties, offered at zero cost to anyone with special needs.

8 interns participated in our Pathway To Employment program in 2025, gaining valuable job experience and building confidence for the future.

11 participants engaged in adaptive swim lessons, receiving instruction that meets their needs, building water safety skills and confidence.



A LIFELONG JOURNEY THROUGH THE WATER

At the YMCA of Greenwich, swimming is more than a skill—it's a lifelong journey. Through a connected pathway of programs, individuals can build confidence, develop skills, and stay engaged in aquatics from childhood through adulthood.

"This program was an invaluable experience for our child. They gained the skills and confidence to stay safe in deep water, and we are incredibly grateful for the opportunity to participate."

-Parent of a 4th grader who participated in our Safety Around Water program

SAFETY AROUND WATER

Every year, we provide free water safety evaluations to 600+ Greenwich Public School 4th graders. Children who need additional support receive 8 weeks of free swim lessons, ensuring they gain essential, life-saving skills.

LIFELONG ENGAGEMENT

The journey doesn't end in youth programs. Many participants continue into adulthood through Masters Swimming, lifeguarding, and ongoing fitness—carrying a lifelong love of swimming and healthy living.

GROUP SWIM LESSONS

After completing Safety Around Water, participants can continue into swim lessons, where they develop technique, confidence, and a strong foundation in the water.

COMPETITIVE AQUATICS

Swimmers can advance into our competitive programs—including swim, dive, and water polo—where they develop discipline, teamwork, and a passion for the sport, while opening the opportunity for collegiate athletics and scholarships.

NON-COMPETITIVE SWIM

Our Swim Club offers a non-competitive team environment where swimmers refine their skills, build endurance, and prepare for competitive aquatics.



EVIDENCE-BASED HEALTH INITIATIVES

WHERE RESEARCH MEETS REAL-LIFE IMPACT.

LIVESTRONG AT THE YMCA

LIVESTRONG at the YMCA is a free, 12-week program designed to help cancer survivors rebuild strength, improve physical fitness, and regain confidence following treatment. Participants benefit from personalized exercise plans and the encouragement of a compassionate, supportive community.

PARKINSON'S BODY & MIND

This specialized program supports individuals living with Parkinson's disease through targeted exercises that improve mobility, balance, strength, and cognitive function. Participants experience not only physical benefits but also meaningful social connection with a monthly support group and classes in a welcoming and supportive setting.

WALK WITH EASE

Developed by the Arthritis Foundation, Walk With Ease is a research-based program that helps individuals safely reduce pain, increase mobility, and improve overall health. Offered free to the community, this program empowers participants to take control of their well-being through guided walking and education.

LAUNCHING IN 2026: TAI CHI

This internationally recognized, evidence-based program uses gentle, flowing movements to improve balance, flexibility, and strength while reducing the risk of falls. Tai Chi for Arthritis and Fall Prevention will further expand the Y's commitment to healthy aging and preventive care.

SUPPORTING HEALTHY AGING

THE NEED:

16% of Greenwich residents are age 65 and older, higher than the Fairfield County average—highlighting the growing need for services that support health and social connection.

Source: Greenwich Hospital, Community Health Needs Assessment for Greenwich and Port Chester (2025)

HOW THE Y ANSWERS:

1.9K+ local seniors rely on our facilities and programs for wellness, community, and support.

565 members receive complimentary YMCA memberships through Medicare-supported programs such as Renew Active® and One Pass®.

100+ participants engaged in evidence-based health programs at the YMCA in 2025.



MORE THAN COMPETITION.

COMPETITIVE AQUATIC PROGRAMS AT THE YMCA OF GREENWICH



GREENWICH AQUATICS WATER POLO

2025 was another incredible year for Greenwich Aquatics Water Polo, with over 300 athletes competing at the national level. 14U Boys made history, earning a silver medal at the National Junior Olympics—the best finish in program history. Our 10U Boys placed 5th in the country, 14U Girls finished 8th, and all other age groups ranked in the top 20. Seven athletes earned All-American honors, and girls teams saw continued success with major tournament wins. In total, 18 players were named to USA National Teams, with three competing internationally, and 11 athletes committed to play at top collegiate programs.

Ulmis Iordache, Head Coach

Kim Tierney-Wang, Program Coordinator

Coaches: Paul Constantin, Thomas Dunstan, John Krill, Daniela Screnci, Eileen Loveless, Addison Collins, Chris Vidale



MARLINS DIVING CLUB

2025 was a standout year for the Marlins Diving Club, marked by continued growth and historic achievements. Our competitive team roster increased by 17%, reflecting the program's strong momentum and expanding reach. At YMCA Nationals, the Marlins made history by earning four major awards, including Men's Team Champions, Women's Team Champions, and Overall All-Around Champions, with Alden Charette named Women's Diver of the Meet. On the national stage, 30 divers qualified for USA Diving Zones, 13 competed at AAU Nationals with one National Champion, and 12 competed at USA Diving Nationals with two National Finalists. Two divers also represented Team USA AAU internationally in Budapest, showcasing the strength of our program at the highest levels.

Dylan Korn, Head Coach

Coaches: Brooke Reinfield, Maureen Arnold, Marci Gray



MARLINS SWIM TEAM

The Marlins Swim Team continues to rank among the top teams in Connecticut Swimming, highlighted by a 3rd place finish at the CT Age Group Championships and a 4th place finish for Senior Women at CT Senior Championships. The team sent 8 swimmers to YMCA Nationals, and 49 qualified for the Speedo Winter Championships, where the team placed 7th overall with multiple finalists and champion relays. Strong performances across age groups, record-breaking swims, and an improved national ranking of 377 out of over 2,800 clubs reflect the program's continued growth and excellence.

Patrick Kennedy, Head Coach

Coaches: Bill Walsh, Noreen Haggarty, Steve Miller, Megan Kelly, Sandi Honey

FINANCIAL REPORTING

FISCAL YEAR 2025

The YMCA of Greenwich is a responsible steward of the resources entrusted to us, ensuring that every dollar supports meaningful impact. Through a combination of public funding, private partnerships, and the generosity of donors, members, and community supporters, we are able to deliver programs that strengthen individuals and families across Greenwich.

An investment in the YMCA is an investment in our community. From membership and program participation to childcare, donations, and volunteer service, each contribution helps expand access and deepen our impact. Together, we are creating opportunities for all people—regardless of background or financial circumstance—to reach their full potential.

Thank you to our dedicated staff, donors, members, and volunteers for another year of meaningful impact. Because of you, the YMCA of Greenwich continues to be a place where individuals and families connect, grow, and thrive.

SUPPORT & REVENUE	2024	2025
MEMBERSHIP	3,675,908	3,987,383
CHILD CARE & CAMP FEES	342,021	334,901
PROGRAM SERVICE FEES	3,210,414	3,625,411
CONTRIBUTIONS & GRANTS	1,193,922	1,296,698
OTHER INCOME	218,938	197,624
TOTAL REVENUE	8,641,203	9,442,017

OPERATING EXPENSES	2024	2025
PROGRAMS	3,335,939	4,109,734
MANAGEMENT & GENERAL	4,219,268	4,332,379
DEVELOPMENT & FUNDRAISING	226,559	335,615
OPERATING EXPENSES	7,781,766	8,777,728
CAPITAL EXPENDITURES	925,498	359,128
SUBTOTAL	8,707,264	9,136,856
DEPRECIATION	1,536,878	1,549,550

- Programs: Includes all youth programming, wellness programming, personal training, aquatic programming, swim school, and Red Cross Training.
- Other Income: Includes all income received from facility rentals.
- Contributions: Includes all donations received, as well as contributions from our annual gala.
- Grants: Includes all grants received, including those from the Neighborhood Assistance Act.
- Management & General: Includes all expenses associated with management, facilities, membership, and communications.
- The ability to cover debt service and capital expenditures is essential for the YMCA's long-term sustainability and successful mission fulfillment.

2025 DONORS

We are grateful for our generous supporters who made a gift between January 1, 2025 and December 31, 2025.

LEADERSHIP CIRCLE

\$100,000+

Morgan Stanley
The Waters Family

CHAIRMAN'S CIRCLE

\$50,000+

The Burton Family Giving Fund
United Way of Greenwich

HEROES

\$25,000+

The Michael & Charlene Bego Family Fund
Berkley Insurance Company
Mario J Gabelli
Lugano Diamonds & Jewelry
Lukaj Family Foundation
Chris and Diane Ohl
Kim & Rich Rosenbaum

BENEFACTOR

\$15,000+

The Thomas & Agnes Carvel Foundation
Brett & Allison Hickey/Star Mountain Capital
Tara & James Waters
John and Stephanie Wu

ADVOCATE

\$10,000+

Abilis Community Foundation
The Bingle Family
Jon & Dana Charette
Connecticut State Department of Education
Karen & Eric Hopp
Orthopaedic & Neurosurgery Specialists (ONS)
The Pacifico Family
Alex Robertson
Bonnie and John Thaler
Mark and Alexandra Zubko

2025 CORPORATE SPONSORS

LUGANO



GOLUB CAPITAL



To learn more about corporate sponsorship, please scan the QR code or contact giving@gwymca.org.



GOLD PATRON

\$5,000+

Amulet Capital
The Atkinson Family
The Audi Family
Avangrid Networks
Saam & Tania Azar
Masood Bhatti and Amy McGrath
Blaustein Family Charitable Trust
BNY Mellon
Carnegie Prep
Mr and Mrs Jeffrey Castle
Andrew and Megan Clark
Clear Street
The Collins Family
Matt DesChamps
Ashley DeSimone
Steve & Katherine Elms
Alan & Jennifer Freedman
Ned & Jennifer Galbally

The Garcia-Alonso Family
Ken & Kaity Geren
Golub Capital
Barton and Betsy Goodwin
Greenwich Psychology Group
Randall and Mary Hack Foundation
Beth and Steve Kampf
Dan Koorbusch
James McAvity
Matthew & Kerry Murphy
Harry E. Peden III
Zeina and John Pike
Susan and Damian Riordan
Gavin & Lisa Steinberg
John Eddy and Leslie Van Orsdel
YMCA of the USA
Judith Zackson

2025 DONORS

SILVER PATRON

\$1,000+

Anonymous
Stephanie Altman
Andujar Property Services LLC
Matthew Baker
John and Anita Bausman
Stephen Baum
The Bens Family
Mitra Best
Brendan & Jacki Brew
Howard & Rita Capek
Hilary and Sean Cassidy
The Chesley Family
Marylin Chou
The James and Robin Coogan Foundation
Brooke and Stephen Day
Elizabeth and Bill DeHaven
Mr and Mrs John H. Erdman, Jr
Birche and Alexa Fishback
Gregory & Kathryn Ford
Patrice Francois
Jack and Hollie Franke
John P. and Audrey Furfaro
Genito Family
N&D Glickberg/Abrahams/Kutler
Greenwich Swim Committee
James Grover
Trish Holloway
Caroline & Luke Jennings
Eric Jensen
Drew Kelley
Simon and Anne Kindel
KOHL'S
LAN & PC Services
Sean & Christine Lavin
Lindy & Warren Lilien
Kirsten Linqvist
Roger Lob and Nancy Heller Lob
Philip and Sally Lochner
Thomas & Marianne Love
Zach Lowe
Dave and Meghan Martucci
The Mendell Family
The Moynihan Family
Judith Murray
James & Allison Nelson
John E. Nelson II
Lynne & Lars Norell

Matthew & Blaine Peck
Serena and Robert Perlman
Gregory Piccininno
Walter and Cristina Pye
Raybin Management, LLC
Scott Rickman
Martin & Natalia Robredo
Joe Rossetti
The Sarah and Daniel Rueven Foundation
The Russian School of Mathematics
Schweiger Dermatology Group
Sendra & Company Architecture, LLC
The Simone Family
Matthew Skaarup and Lisa Mancini
Sound Mind Collective
Eric & Natalie Stein
James Stratoudakis
Matt Swanson
Maya & Robert Tichio
Jamie & Matt Toothman
Bruce Yannett & Jessica Tolmach
Katie Vadasdi
Hugh Vanderbilt
Carter Vann
David and Mary Versfelt
Richard & Christine Walker
Dave & Marie Wardell
Richard & Alison Wellington
Kimberly & Eric Wise

BRONZE PATRON

\$500+

Anonymous
Chantal Adair
Paul E. Ball
Elizabeth A. Blake and James S. Waugh
The Blanchett Family
The Bound Family
Steven Burka
Nathan Cray
Elizabeth DeVan
Marisa and Joe Femenia
Amory and Annette Fiore
Lin Gao
The Goergen Foundation Inc
Danielle Goodwin
Nora Parry, President Greenwich Lions
Frank Grese
Peter & Sandra Helmer

IN KIND DONORS

Aesop
Alpen Pantry
Asiana Cafe
Athena Books
Athleta
Bea's Kitchen & Catering
Bee Shapiro
Bella Nonna Greenwich
Betteridge
blo blow dry bar
Boll and Branch
Boxcar Cantina, Inc.
Classic Kids Photography
Clubhouse at the Griff
Cozy Nails & Beauty
Corbo's Corner Deli
Daniele Watchmaker
Daniel Derman
Delamar Greenwich Harbor
Diamond Nail & Spa
Empy's Day Spa
Faherty Brand
Fairfield Cheese
Firehouse Deli
Fjord Fish Market
FRED
Funky Monkey
GAS Bijoux
Geoff Lazlo Food LLC
Gorjana
Grigg Street Pizza
Green & Tonic
Greenwich Beauty Lounge
Greenwich Country Club
Greenwich Sports Medicine
Greenwich Town Party
Hästens Greenwich
Hoagland's
Horseneck Wines
Hyatt Regency
Inside the Armoire
J. McLaughlin
Jafar Tazi Salon
Lugano Wine Bar
Lugano Diamonds & Jewelry
Lynnen's Greenwich
Magnolia Salon
MichaelAngelo of Greenwich
myeyedr
Olive & Bette's
Papitos Empanadas
Il Pastaficio
Pinky of Greenwich
Pologeorgis
Posh Nail Spa
Precision CleanPro
Ralph's Italian Ice
Richards
Salon Greenwich
Salon Mimoza
Shreve, Crump & Low
SLATE Cafe
Smart Kids Toys
Southern Tide
Splurge
State and Liberty
Steven Fox Jewelry
SuitSupply
The Granola Bar
The Pacifico Family
The Pike Family
The Piccolina Shop
The Rosenbaum Family
Todd Snyder
Tony's at the J House
Tony C
Trapp Optical
Vineyard Vines
Wilderness Destinations
Xerox

Tyler & Amie Hogan

Jackie & Sol Israel

Dr. Chris and Penelope Kassaris

Beau & Christine Keen

Jon & Chalon Lefebvres

Lengle Family

Grace Lu

Matthew Maciejewski

Janet Stone and Peter McGuigan

The Mendelsohn Family

The Nassa Family

Marc and Ruth Newburg

Dave & Stacy Norton

Dakota O'Brien

Jerome Ostrov & Roberta Baruch

Rachel Robison

2025 DONORS

BRONZE PATRON

\$500+

Kristofer Schlachter
Elizabeth Scullin
Jennifer Shaw
Bharath Srikrishnan & Christina Sogaard
David & Aliana Spungen
Adrian Stroie
Suzanne Sullivan
Jason & Joanna Young

Debra Feldman
Susan Ferris
Senlee Figueroa
Jodi Fitzgerald
Mary Ann Fitzgibbon
Erin Flynn
John Francioni
Sunil Gadtaula
Lauren Gaita
Christine Garmann
David & Trina Geatz
Mia Goldman
Alan Gordon
Greenwich Braces
Clare Gruendel
Sean and Maureen Harrigan
Kevin and Kathleen Harrington
Kathy Harsany
The Harty Party
Fritz Henderson
Mark Henderson
William & Mary Herzog
Jim and Chrissy Heyworth
Anne M Hohlweck
Dr. Ira Honig
Tom Hughes
Ulmis Iordache
David Johnson
Lisa Johnson
John and Bridget Jordan
Kevin & Josephine Judge
Jeffrey & Carol Junker
Kanfer Family
Julie Karish
Stephen Katz
Joseph Keeney
Harry Keeshan
Brien Kelley
Elizabeth Kennedy
Mr. and Mrs. William Kennedy
Patrick Kennedy
Antoinette Kent
Debra Klein
Hans & Beatriz Klingbeil
Clarissa Koh
Dylan Korn
Nancy LaDore
Marie Josee Lafontaine
Aie Teck Lau
Leao Family
Linda and Paul Lee
Steven Lesperance
Chris Lippi
Caity Lischick
Carlos Lithgow
John Macaskill
Janet Mackenzie
Claudia Shia Macora

Jan Del Mar
Annette Marijan
Eugene Martine
Eduoard Matitia
Matsumoto Family
Drew McCormack
Mary McEvoy
Carol and Michael Melaugh
Steve Melvin
David Micik
Mike and Celi Moen
Sal Molluzzo
Susan White Moore
Herb and Linda Morey
Erica Brawner Morizio
James Mullins
Jane & Alan Neustadter
Rose Nichols
Michael and Noelle
Maryanne O'Connor
Barbara & John O'Neill
Alain Oberrotman
Sarah OKeefe
Danny Olivares
Gesthimani Kouloukis Papaioannou
John and Hilary Pearl
Monica & Marco Sam Pelegrino
Jane and Grant Perkins
Anne-Marie Peterson
Cathy Pettigrew
Shonnel Phillip
Bob and Adriana Phillips
Mr. & Mrs. Phillips
James Pomfret
Monica Prihoda
Prose Family
Frederic Putnam
Debbie Ragals
Kanta Rajkumar
Cathy Ranieri
Angela Reeve
Joel and Judith Rein
Elijah Riley
Alex Rogers
Daniela Roig
Roger and Andrea Roosendahl
Christine Rossi
Allen and Helene Rothman
Geraldyn & Michael Rubenstein
Linda Ruggieri
Manuel Salcedo
Michelle Sario
Andrei & Carolyn Saunders
Joe & Sandy Schepis
Liz Schnitter
Robby Schultz
Daniela Screnci
Renee Selatnigg

Sonal and Shyam Sheth
Jo Ellen Shomer
Charlotte Shropshire
Jon Shumaker
Mary Silva
Anne Silvey
Peter Sisca
Charles Slivinski
Paul Smailes
Matt & Rachel Smith
Nate Smith
Sunyua Song
Elizabeth Sorenson
Kristin Stephens
Peter Stern
Susan Bernhardt Sternberg
Theresa Sutton
Sophia Syed
Alexandra Tanner
James Torrey
Mike and Debbi Trager
Elizabeth Tremain
Sierra Trudel
Vanessa Trutt
Brenda Underwood
David Vassel
Peter & Lyndal Vermette
Nils Vigeland
Alina Vincze
Bonnie Wallace
Kim Wang
Joel & Karen Wartell
Jeremy Weinberg
Howard Weintraub
White Tiger Tae Kwon Do LLC
Margaret Whitlock
Michael Yaeger
Chris Zadik
Michael Zarrilli

FRIENDS

UP TO \$499

Anonymous (4)
4Joy Sports
Advant Engineering and Inspections
Alpen Pantry
Carolyn Altieri
Brian Amen
Oscar Arenas
Thomas Arenz
Paul Asaro
Deborah August
Rosalia Barnes
Karen and Graham Beatty
Robert Belson
Ricky Biagi
Richard Bolton
Randy Bonett
Albert Brodbeck
Nate Bruce
Jacqueline Cabrera
Jeffrey Cammisa
Richard Cantor
Donna Cohen
Paul Constantin
John and Katherine Coppinger
Ann Coughlin
David Curran
Richard Dannenbaum
Sarah Decossard
Heather DeVries
Jeanne DiGennaro
Ken Dolan
Charlotte & Keith Donnermeyer
Leslie Donovan
Kate Dowling
Doyle Family
Francesca Dunn
Arline Boyer Epstein
F+F Mechanical
Quentin Ball & Brett Fagan
Julie and Danny Faryniarz

If we have omitted or misspelled a name, we apologize and ask that you contact Dakota O'Brien at dobrien@gwymca.org so we may update our records.

WAYS TO SUPPORT

Your support helps ensure that everyone in our community has the opportunity to learn, grow, and thrive at the Y.

DONATE ONLINE

Through our online portal, you can make a one-time or recurring gift by credit card or Apple Pay.

Scan the QR code to donate online.



DONATE BY MAIL

To mail your gift, send your checks to:
YMCA of Greenwich, c/o Deborah August,
50 East Putnam Ave. Greenwich, CT 06830

PAY IN SECURITIES

Scan the QR code to visit our website for instructions and broker information to complete your gift.



DONOR ADVISED FUNDS

Please consider recommending the YMCA of Greenwich (Tax ID# 06-0646976) as an organization to support through your donor advised fund.

For more information, contact Deborah August at giving@gwymca.org.

MATCHING GIFTS

Many employers match charitable donations, multiplying your impact at no additional cost. Check with your employer to see if your gift to the Y qualifies.

LEGACY GIVING

Include the Y in your estate plans, providing critical future support and ensuring that Y thrives for another 100 years. Planned gifts can be made by bequests, charitable trusts, or life insurance policies.

CORPORATE GIVING

Partnering with the YMCA of Greenwich as a corporate sponsor helps your organization gain visibility while supporting programs that strengthen the lives of children, families, and individuals across Greenwich.

Opportunities may include brand exposure through facility banners, digital advertising, event sponsorships, community programs, educational lectures, and more—connecting your business with a highly engaged local audience.

Scan to learn more about corporate sponsorship.



SUPPORT A DIFFERENT WAY: THE YMCA OF GREENWICH ANNUAL GALA

Our Annual Gala is one of the YMCA of Greenwich's most important fundraising events, generating nearly one-third of our total annual support. Each year, this event brings together community leaders, donors, and supporters to celebrate impact and raise critical funds that ensure our programs remain accessible to all.

OUR 2025 HONOREE: GOVERNOR NED LAMONT

In 2025, we were proud to honor Governor Ned Lamont, a longtime advocate for Connecticut communities and supporter of the YMCA.

A former Greenwich selectman and YMCA of Greenwich board member, he has championed initiatives that strengthen families, including investments in childcare, youth programs, mental health, and water safety. His leadership and commitment to service reflect the values of the YMCA, and we were honored to recognize his impact.



Support the Gala through sponsorships, ticket purchases, auction participation, journal advertisements, or donations—each playing a vital role in strengthening our community.

For more information, contact us at giving@gwymca.org.

SUPPORTING PROGRAMS THAT CHANGE LIVES

\$490K+

raised in our 2025 'An Evening in Las Vegas' gala, with all proceeds supporting:

- membership and program scholarships
- access to water safety education
- childcare scholarships, chronic disease prevention programs
- adaptive programs

BOARD OF DIRECTORS

Robert Burton
Chairman of the Board

Amy McGrath
Secretary

Kimberly Rosenbaum
Vice Chair of the Board

Jon Charette
Treasurer

Julie Atkinson
Saam Azar
Mike Bego
Marcel Bens
Rita Capek

Elizabeth DeHaven
Jennifer Garcia-Alonso
Brett Hickey
Dan Koorbusch
Philip Lochner

Richard Lukaj
Scott Rickman
Susan Riordan
Anne Silvey
John Wu

LEADERSHIP TEAM

Matthew Skaarup
Chief Executive Officer

Steven Lesperance
Facilities Director

Nate Smith
Vice President of Operations

Stephen Melvin
Director of Finance

Jodi FitzGerald
Senior Director of Member Experience

Devin Monahan
Wellness Center Manager

Deborah August
Director of Development

Dakota O'Brien
Director of Marketing & Communications

Julia Borges
Camp & After School Site Director

Deanna Perez
Director of Education Programs

Lauren Gaita
Director of Aquatic Programs & Development

Manuel Salcedo
Membership Director

Kelley Gordon-Minott
Director of Youth & Family Programs

Ildiko Simon
Director of People & Culture



THE Y: A VITAL COMMUNITY ASSET

For more information on how the YMCA of Greenwich is making a difference in our community, visit:

GreenwichYMCA.org/Give/Annual

YMCA OF GREENWICH

50 EAST PUTNAM AVENUE
GREENWICH, CT 06830



[GREENWICHYMCA.ORG](https://GreenwichYMCA.org)



203-869-1630



@YMCAGREENWICH



@YMCAGREENWICHCT

